



MINISTÈRE DE L'INTÉRIEUR

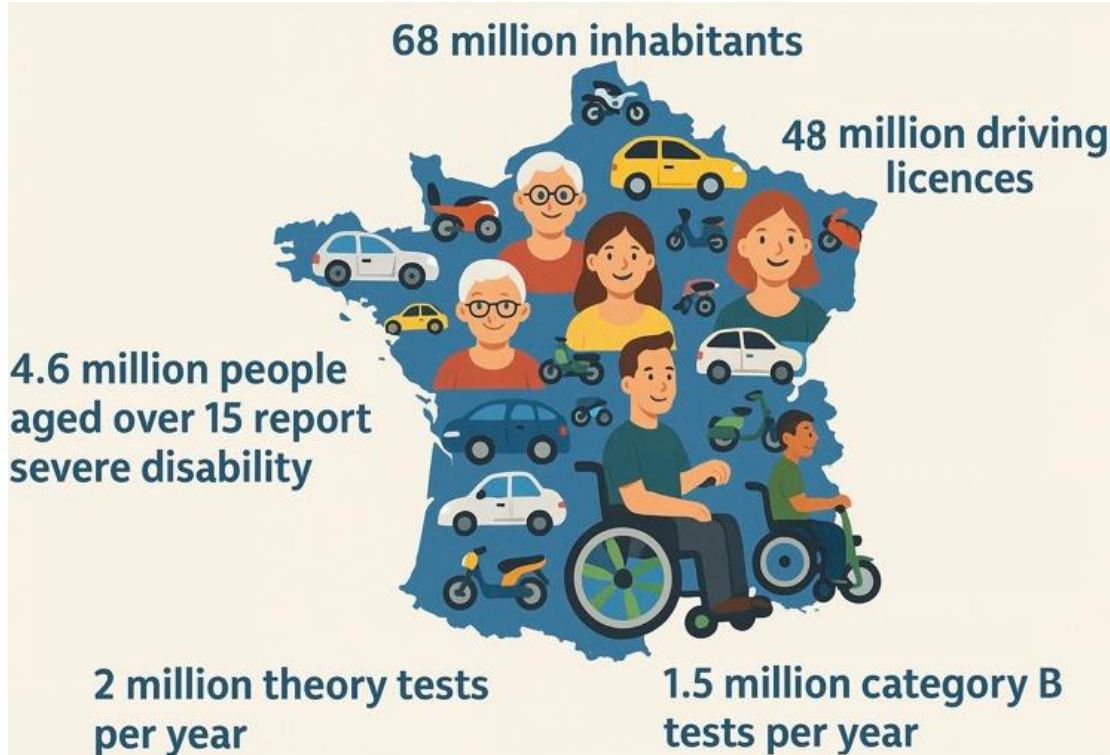
*Liberté
Égalité
Fraternité*

Taking better account of disability in driving lessons and driving tests in France

Délégation à la Sécurité Routière

SÉCURITÉ
ROUTIÈRE **VIVRE,
ENSEMBLE**

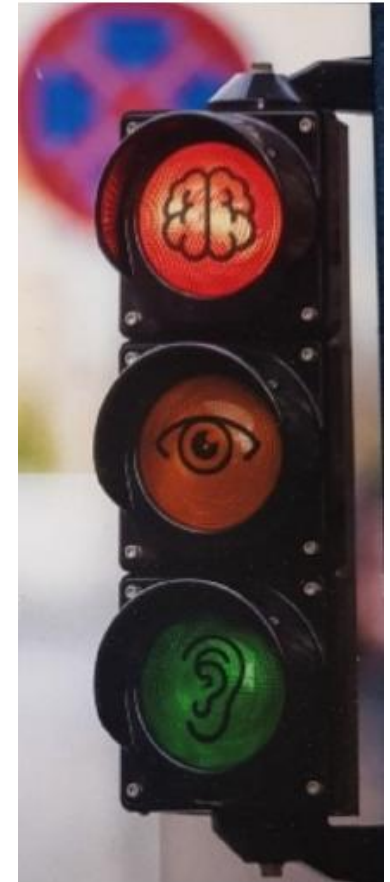
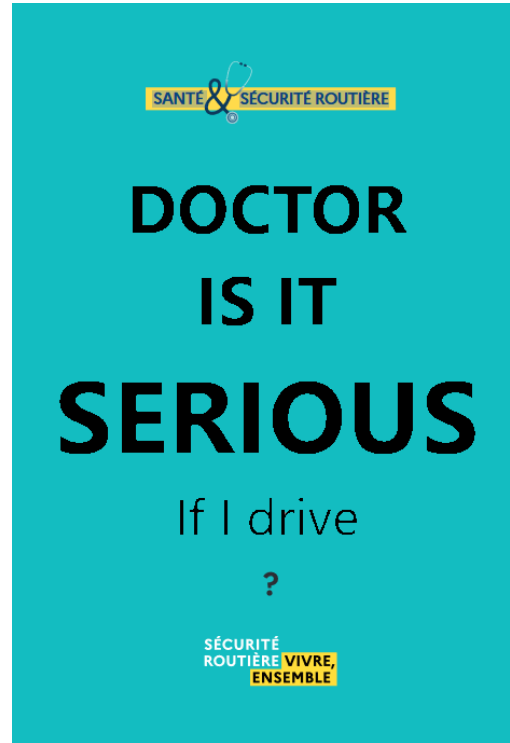
The current state of driving and disability in France



Our vision: driving a land motor vehicle requires physical, cognitive and sensory aptitude

The first person responsible for medical fitness to drive is the driver:

The driver assesses his or her ability to drive in the light of medical conditions, state of fatigue and vigilance, mobility, and the use of medication or psychoactive substances.



Our vision: The main effort to compensate for disability must be made to improve driving instruction. Adapting driving tests is also necessary, but must be kept to a minimum to ensure equality between users.



Work in progress on physical disability:

No prohibition subject to
compensation



Scientific and technological innovations

a case-by-case medical examination policy

Work in progress on physical disability:

An online map of specialized driving schools



CARTE DES AUTO-ÉCOLES



Work in progress on physical disability: the test

A disability advisor
examiner in each
101 regional unit



The translation of theory test
questions into sign language



Work in progress on physical disability: sustained attention to the driving of heavy vehicles

4 functional ability
assessment
center



Work in progress on physical disability: sustained attention to the driving of heavy vehicles

An equipped vehicle available to training centers



Work in progress on physical disability: digital devices to compensate for deafness Translation of spoken words into pictograms

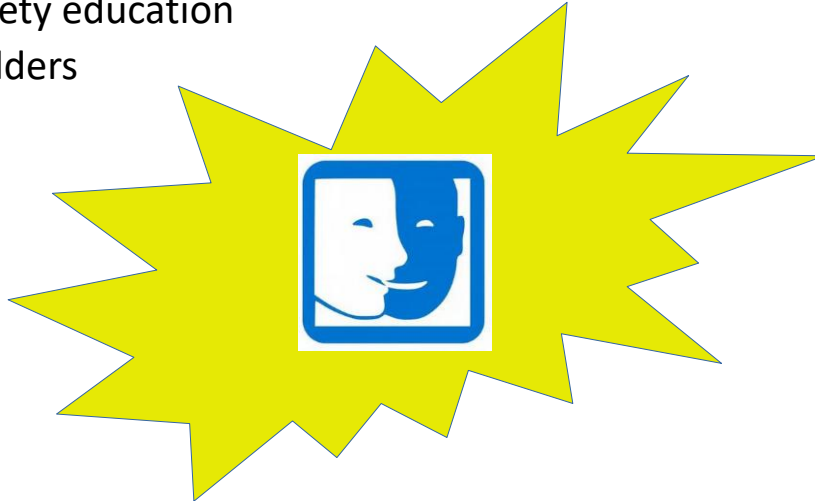


Translation and localization of external sounds (such as sirens) into pictograms



Work in progress on neurodevelopmental disorders:

Initiation of consultation with
road safety education
stakeholders



Development of a
toolbox to promote
best practice

Under construction toolbox: *recommendations on “neurodevelopmental or acquired cognitive disorders” and learning to drive*

Main ideas:

- identify people ;
- adaptation of teaching ;
- no change to the structure of the practical exam.



Thanks for your attention