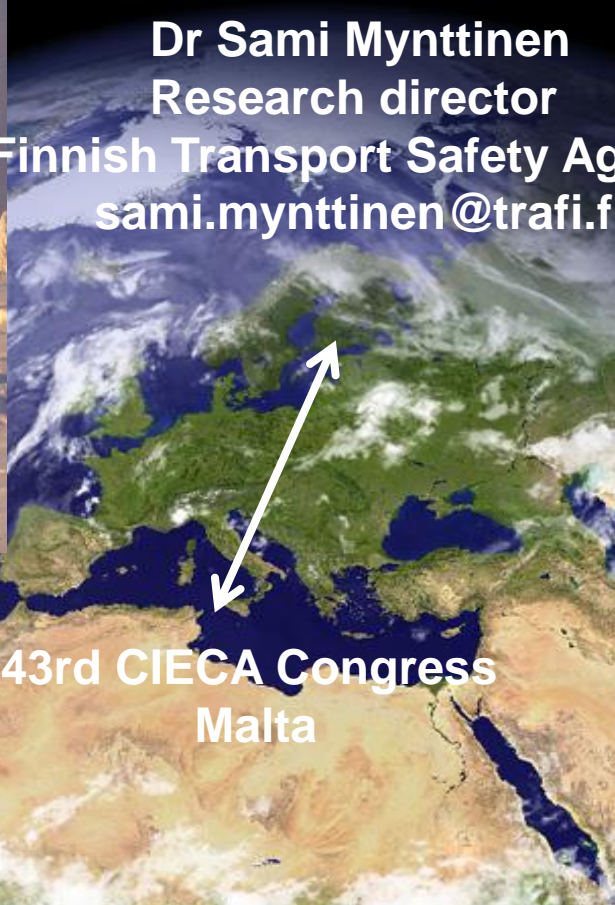




**Dr Sami Mynttinen**  
Research director  
Finnish Transport Safety Agency  
[sami.mynttinen@trafi.fi](mailto:sami.mynttinen@trafi.fi)



**43rd CIECA Congress**  
Malta



# **Novice drivers' safety, education and testing**

43<sup>rd</sup> CIECA Congress Malta

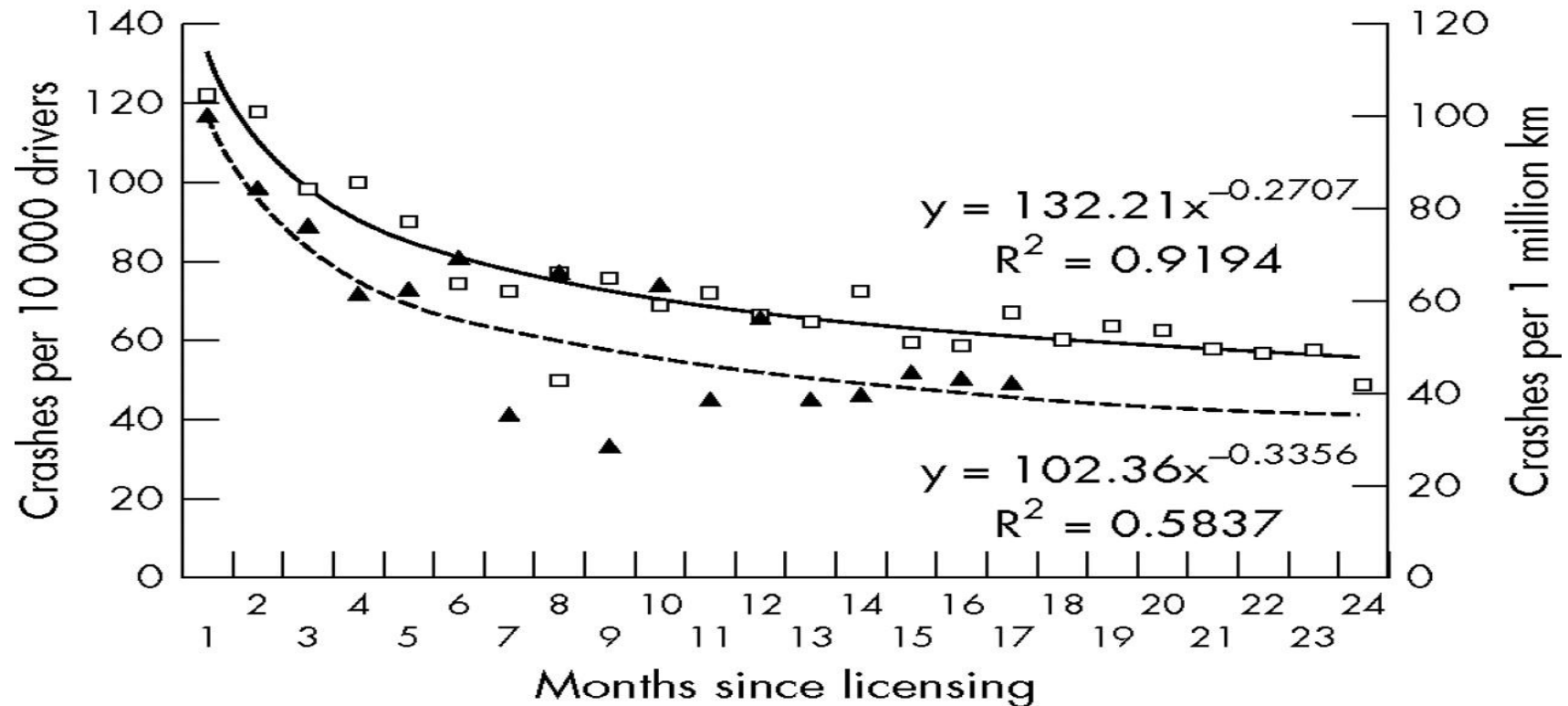
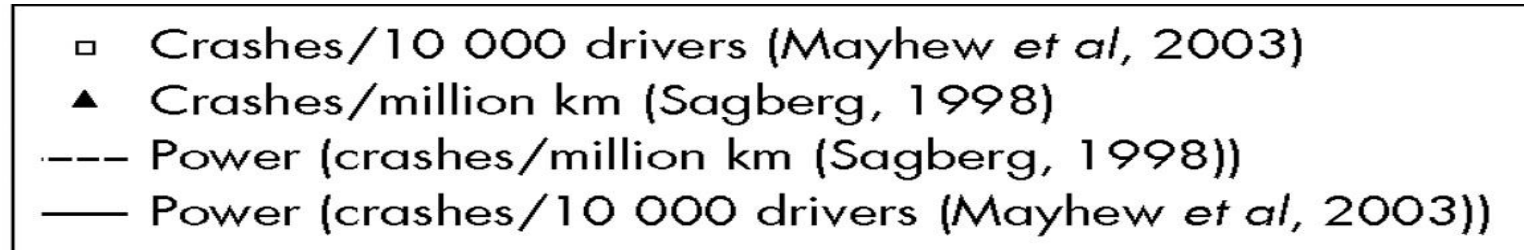
Dr Sami Mynttinen  
Research director  
Finnish Transport Safety Agency  
[sami.mynttinen@trafi.fi](mailto:sami.mynttinen@trafi.fi)

**Responsible traffic. A joint effort.**

# Contents

- Introduction
- Adaptation to the surrounding traffic culture and the accident risky beginning of the solo driving
- Education + testing = initial competences for the safety
- Some words of the quality
- An idea for the future

# Accident risk & early solo driving



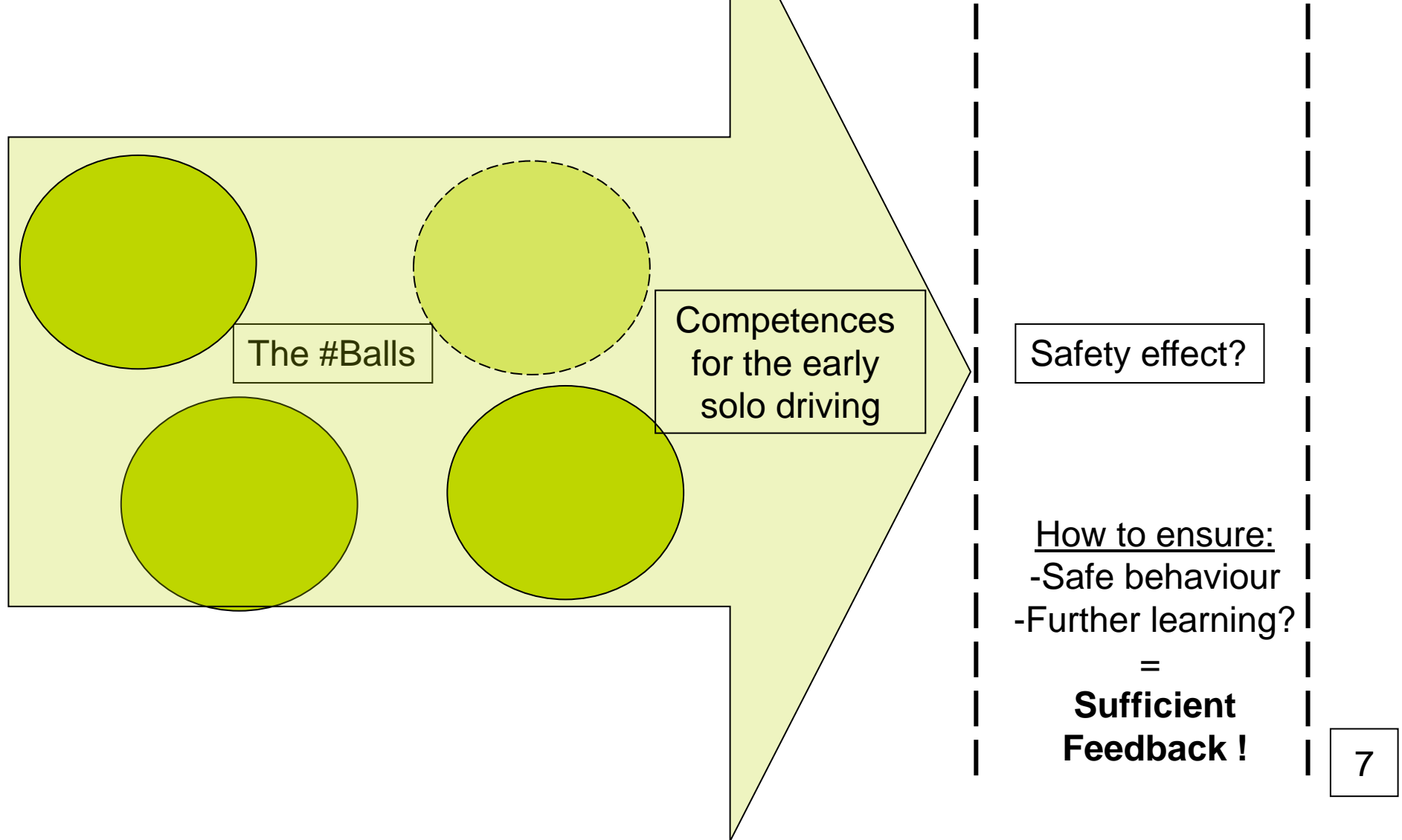
(Traffic)cultures are not similar



# The Goals for Driver Education (GDE) model plus the fifth level of cultural requirements

Hierarchical level of behaviour	Knowledge and skills	Risk-increasing factors	Self-evaluation
<b>Cultural, sub-cultural and societal requirements</b>			
Goals for life and skills for living (general)	Knowledge of/control over how life-goals and personal tendencies affect driving behaviour <ul style="list-style-type: none"> <li>- lifestyle / life situation</li> <li>- group norms</li> <li>- motives</li> <li>- self-control, other characteristics</li> <li>- personal values</li> </ul>	Risky tendencies <ul style="list-style-type: none"> <li>- acceptance of risks</li> <li>- self-enhancement through driving</li> <li>- high level of sensation seeking</li> <li>- complying with social pressure</li> <li>- use of alcohol and drugs</li> <li>- values, attitudes towards society</li> </ul>	Self-evaluation/ awareness of <ul style="list-style-type: none"> <li>- personal skills for impulse control</li> <li>- risky tendencies</li> <li>- safety-negative motives</li> <li>- personal risky habits</li> </ul>
Goals and context of driving (trip-related)	Knowledge and skills concerning <ul style="list-style-type: none"> <li>- effects of trip goals on driving</li> <li>- planning and choosing routes</li> <li>- evaluation of requested driving time</li> <li>- effects of social pressure in car</li> <li>- evaluation of necessity of trip</li> </ul>	Risks connected with: <ul style="list-style-type: none"> <li>- driver's condition (mood, BAC, etc.)</li> <li>- purpose of driving</li> <li>- driving environment (rural/urban)</li> <li>- social context and company</li> <li>- extra motives (competing, etc.)</li> </ul>	Self-evaluation / awareness of <ul style="list-style-type: none"> <li>- personal planning skills</li> <li>- typical goals of driving</li> <li>- typical risky driving motives</li> </ul>
Mastery of traffic situations	Knowledge and skills concerning <ul style="list-style-type: none"> <li>- traffic rules</li> <li>- observation/selection of signals</li> <li>- anticipation of course of situations</li> <li>- speed adjustment</li> <li>- communication</li> <li>- driving path</li> <li>- driving order</li> <li>- distance to others / safety margins</li> </ul>	Risks caused by <ul style="list-style-type: none"> <li>- wrong expectations</li> <li>- risk-increasing driving style (e.g. aggressive)</li> <li>- unsuitable speed adjustment</li> <li>- vulnerable road users</li> <li>- not obeying rules / unpredictable behaviour</li> <li>- information overload</li> <li>- difficult conditions (darkness, etc.)</li> <li>- insufficient automatism/skills</li> </ul>	Self-evaluation / awareness of <ul style="list-style-type: none"> <li>- strong and weak points of basic traffic skills</li> <li>- personal driving style</li> <li>- personal safety margins</li> <li>- strong and weak points for hazard situations</li> <li>- realistic self-evaluation</li> </ul>
Vehicle manoeuvring	Knowledge and skills concerning <ul style="list-style-type: none"> <li>- control of direction and position</li> <li>- tyre grip and friction</li> <li>- vehicle properties</li> <li>- physical phenomena</li> </ul>	Risks connected with <ul style="list-style-type: none"> <li>- insufficient automatism/skills</li> <li>- unsuitable speed adjustment</li> <li>- difficult conditions (low friction, etc.)</li> </ul>	Awareness of weaknesses <ul style="list-style-type: none"> <li>- strong and weak points of basic manoeuvring skills</li> <li>- strong and weak points of skills for hazard situations</li> <li>- realistic self-evaluation</li> </ul>

# What are the necessary competences for the early solo driving?



When?



**THE FUTURE**

**NEXT EXIT**





> 2011 !

# Thank You for Your Attention

Dr Sami Mynttinen  
Research director / Finnish Transport Safety Agency (Trafi)  
[sami.mynttinen@trafi.fi](mailto:sami.mynttinen@trafi.fi)